

KORTE



## 2009

The company starts working with Solid surface.

Das Unternehmen beginnt mit der arbeit mit Kunststein.

Компания начинает работать с "искусственным камнем".

Uzņēmums sāk strādāt ar "mākslīgo akmeni".



## 2010

Korte.lv receives a quality certificate for fabricating Dupont™ Corian®.

Korte.lv erhält von Dupont™ Corian® ein Qualitätskonformitätszertifikat.

Korte.lv получает сертификат соответствия качества Dupont™ Corian®.

Korte.lv saņem kvalitātes atbilstības sertifikātu no Dupont™ Corian®.



## 2011

Creates a series of Scrub sinks, specially designed and intended for operating rooms.

Erstellt eine Reihe von Spülen, die speziell für Operationsäle entwickelt wurden.

Создает серию раковин, специально разработанных для операционных блоков.

Izveido ķirurģisko izlietņu sēriju, kas īpaši pielāgota operāciju zālēm.



## Since 2009

The company exports and does installation on its products all around the world.

Das Unternehmen exportiert und installiert seine Produkte weltweit.

Компания экспортирует и устанавливает свою продукцию по всему миру.

Uzņēmums eksportē un uzstāda savu produkciju visā pasaulē



1500 m2  
working  
space

45  
employees

1000  
projects  
per year

process  
7600 m2  
of solid  
surface  
per year

# About

Clean, disinfected hands are one of the key requirements for medical professionals. Medical workers wash and disinfect their hands countless times on a daily basis. Hand hygiene is a mandatory and integral part of medicine regardless of which pathogens might be present.

We offer several models of solid-surface scrub sinks to provide convenient and efficient solutions for hand washing and disinfection for medical workers. Corian® solid surface is a high-quality mixture of natural minerals and acrylic polymer. It is a functional and practical material with unlimited design possibilities. The Corian® material has a high chemical resistance; it is non-porous and hygienic, has antibacterial properties, and is remarkably durable, with inconspicuous joints. Additionally, the sink cannot delaminate and fluids cannot penetrate the material. Because of its antibacterial properties and easy care, Corian® is especially suitable for use in places with strict hygiene requirements, such as hospitals, operating theatres, laboratories, and other health-care facilities.

Functional and convenient solutions for operating theatres – sinks designed and intended for surgeons. Recommended to be equipped with a contactless faucet with a temperature adjuster.

# Content's



## DB Series

DB Simple, Single, Double, Triple

## WDO Series

WDO Simple, Single, Double, Triple



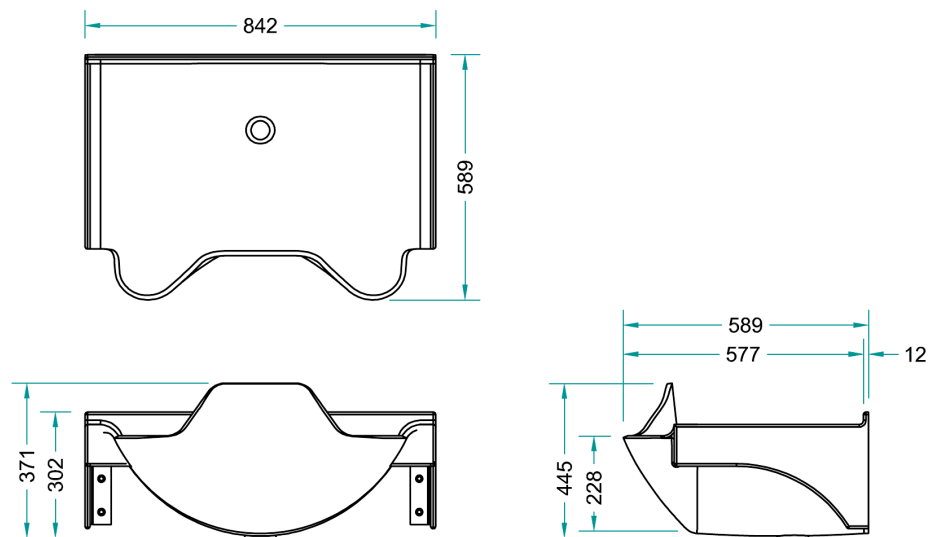
## ABRA Series

ABRA Single, Double, Triple





## DB Simple

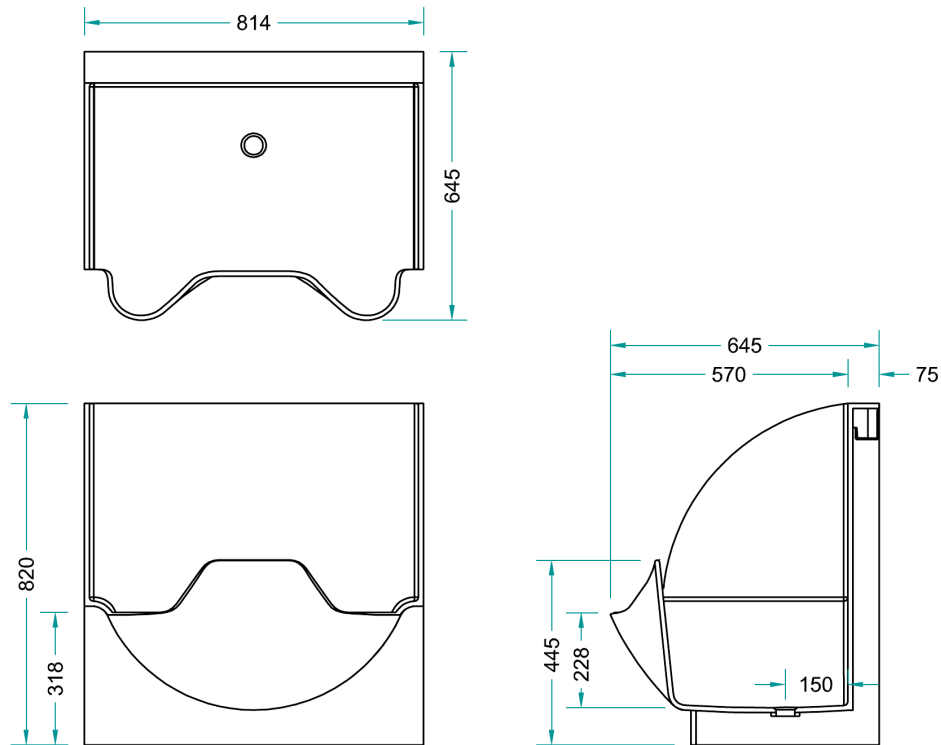


## DB Series advantages:

- elevated front part of the sink – protection against water splashing onto clothing;
- sufficient depth – protection against water splashes and drops, while providing no risk of accidentally touching the bottom of the sink with already clean hands;
- the sink has no flat surfaces – an additional precaution to prevent placing any objects not related to hand washing and disinfection on the sink, in order to keep the area as clean as possible;
- rounded inside corners – for convenient and effective sink cleaning;
- wall-mounted – does not occupy extra space on the floor and does not interfere with floor cleaning;
- easily attached to the wall – installation does not require any additional structures;
- white colour – dirt can be noticed easily and cleaned effectively. If the sink looks clean, it is clean.



## DB Single



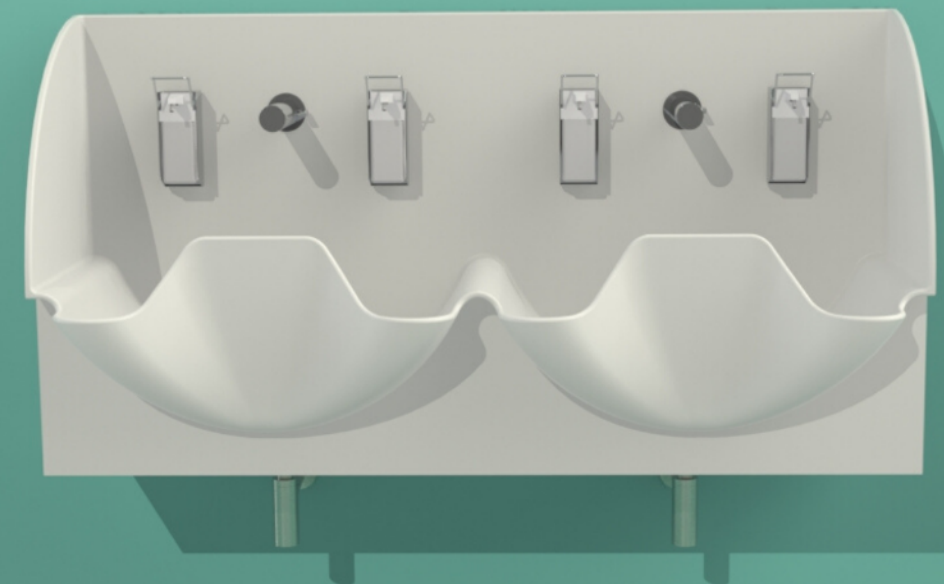
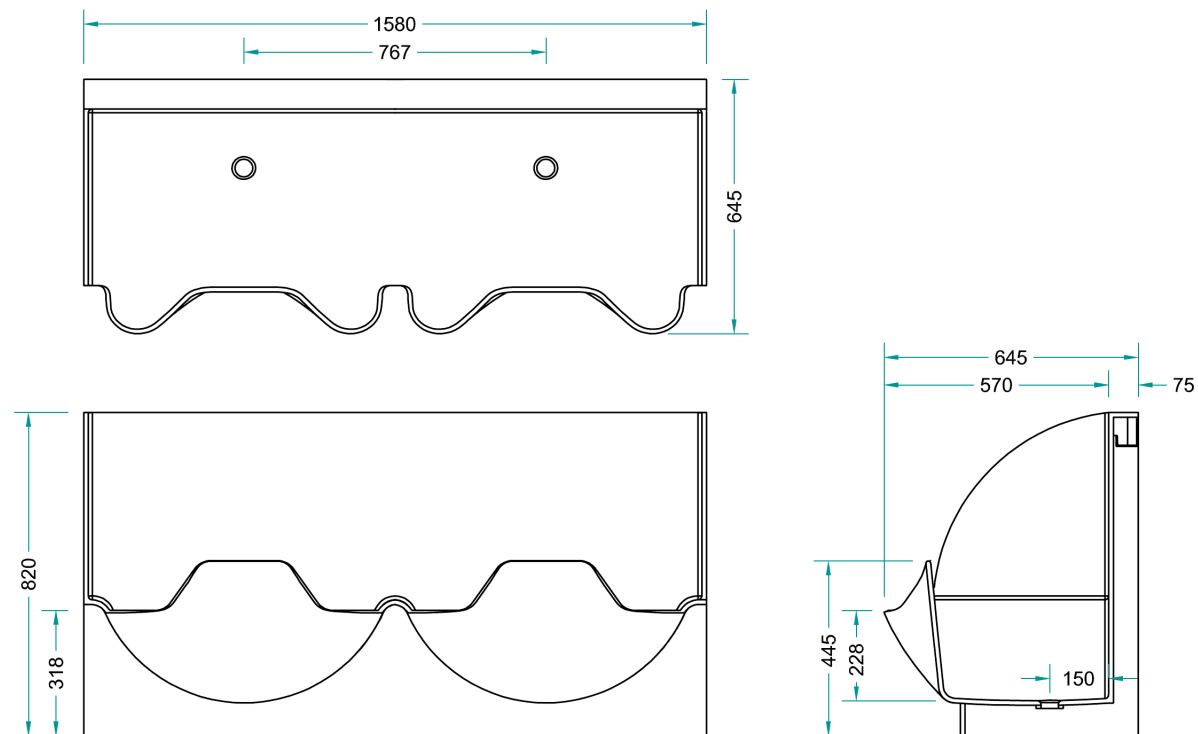
- cover panels at the back and sides of the sink – allow for convenient and efficient maintenance of the sink, and protection against water splashing onto walls;
- back panel is fully adapted for the installation of plumbing – no additional elements are required for the installation of the faucet and disinfectant dispensers.





## DB Double

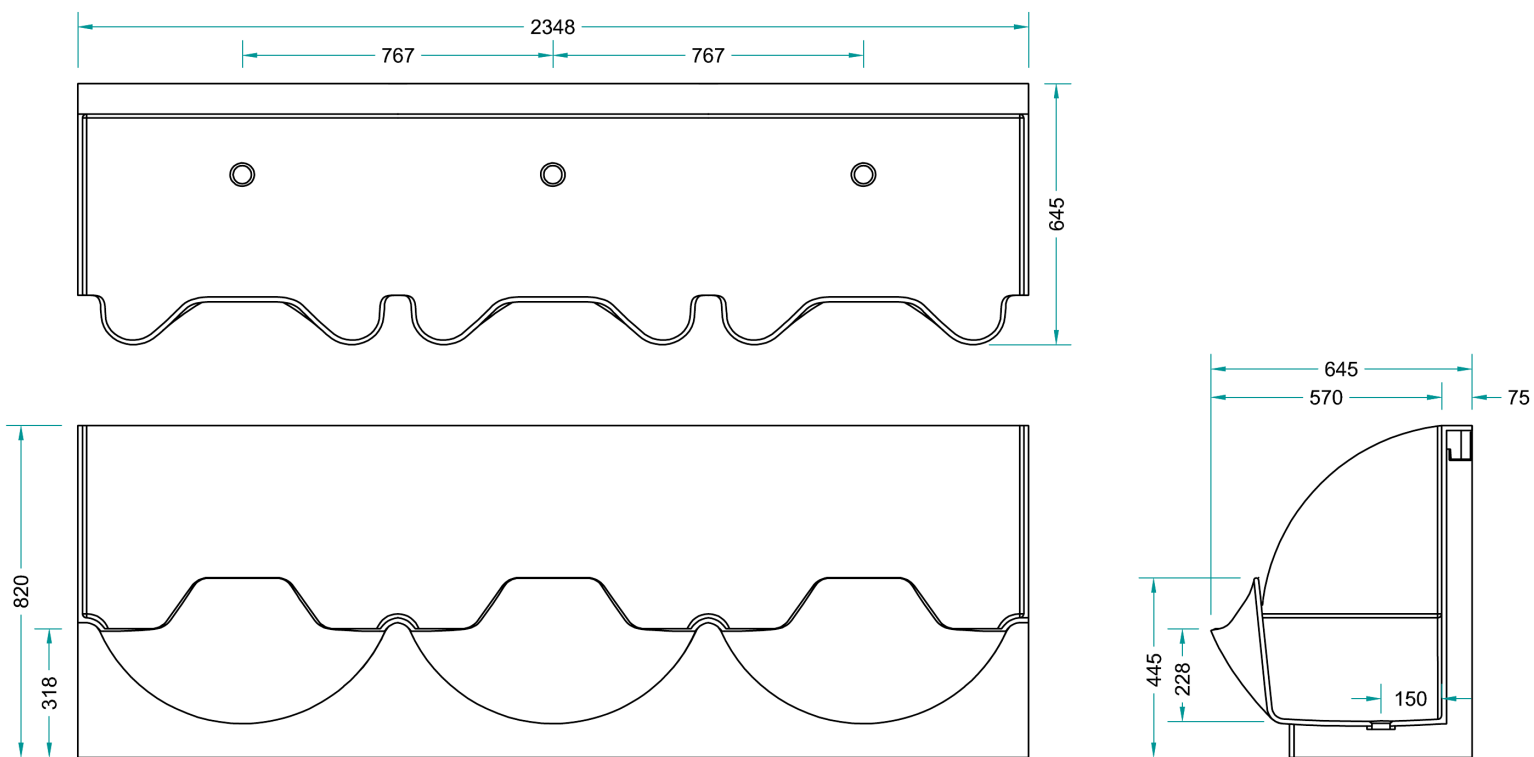
- two sinks in one – no joints or seams between the sinks. A one-piece construction for high standards of hygiene.





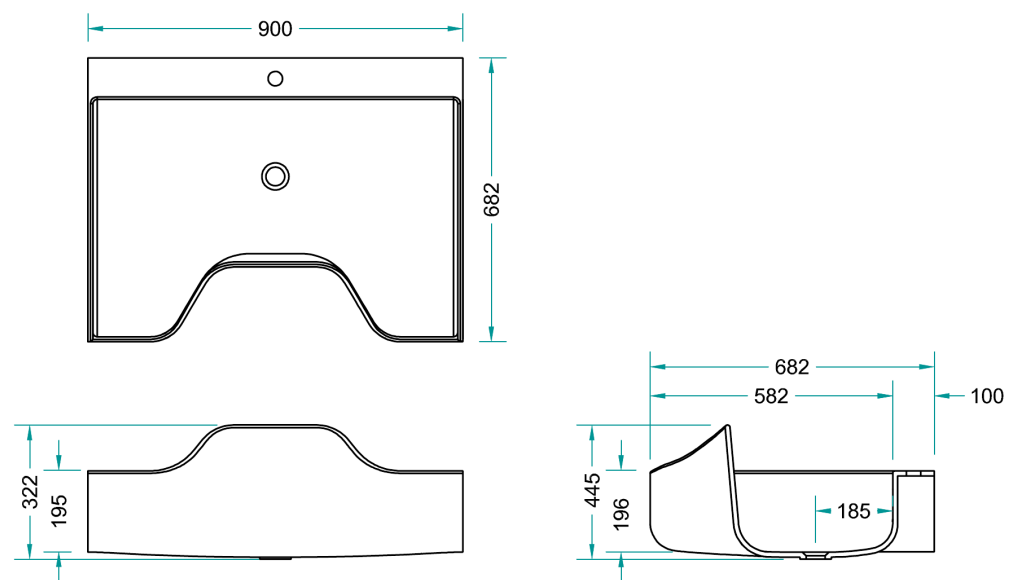
# DB Triple

- three sinks in one – no joints or seams between the sinks. A one-piece construction for high standards of hygiene.





## WDO Simple



## WDO Series advantages:

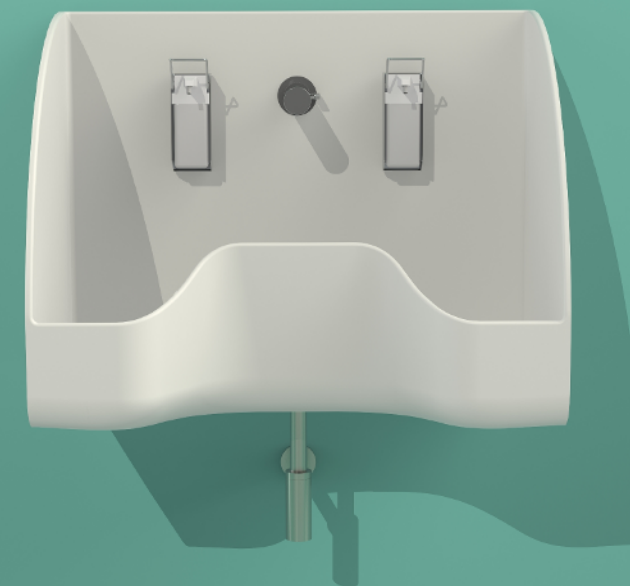
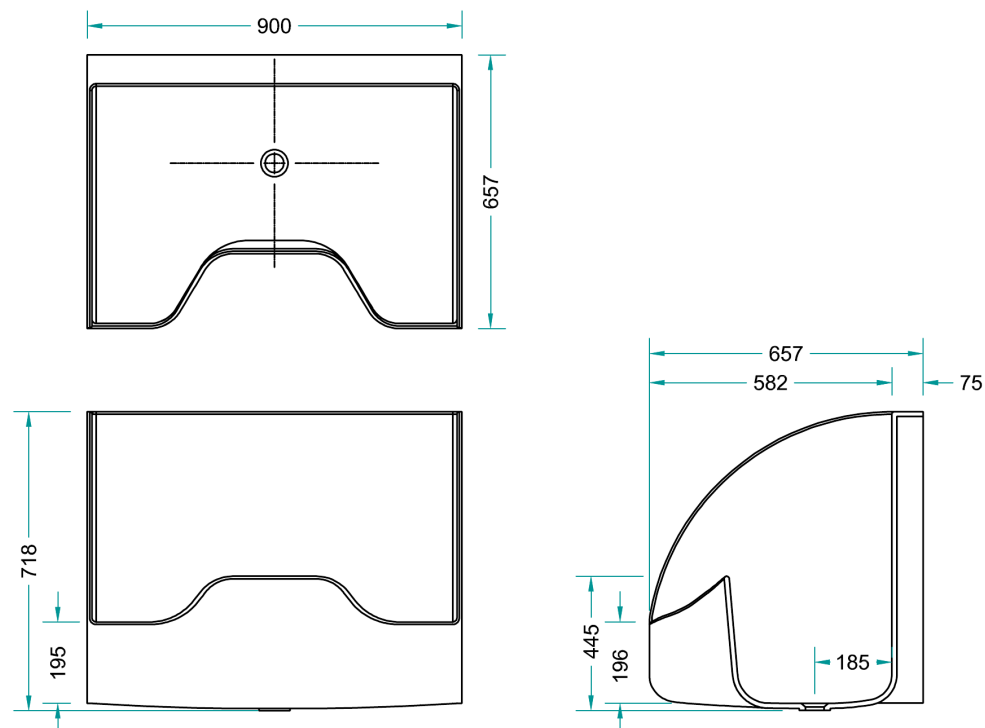
- Ergonomic design – the mixer tap is placed higher on the sink, which is more ergonomic and comfortable for the user.
- elevated front part of the sink – protection against water splashing onto clothing;
- sufficient depth – protection against water splashes and drops, while providing no risk of accidentally touching the bottom of the sink with already clean hands;
- the sink has no flat surfaces – an additional precaution to prevent placing any objects not related to hand washing and disinfection on the sink, in order to keep the area as clean as possible;
- rounded inside corners – for convenient and effective sink cleaning;
- wall-mounted – does not occupy extra space on the floor and does not interfere with floor cleaning;
- easily attached to the wall – installation does not require any additional structures;
- white colour – dirt can be noticed easily and cleaned effectively. If the sink looks clean, it is clean.





## WDO Single

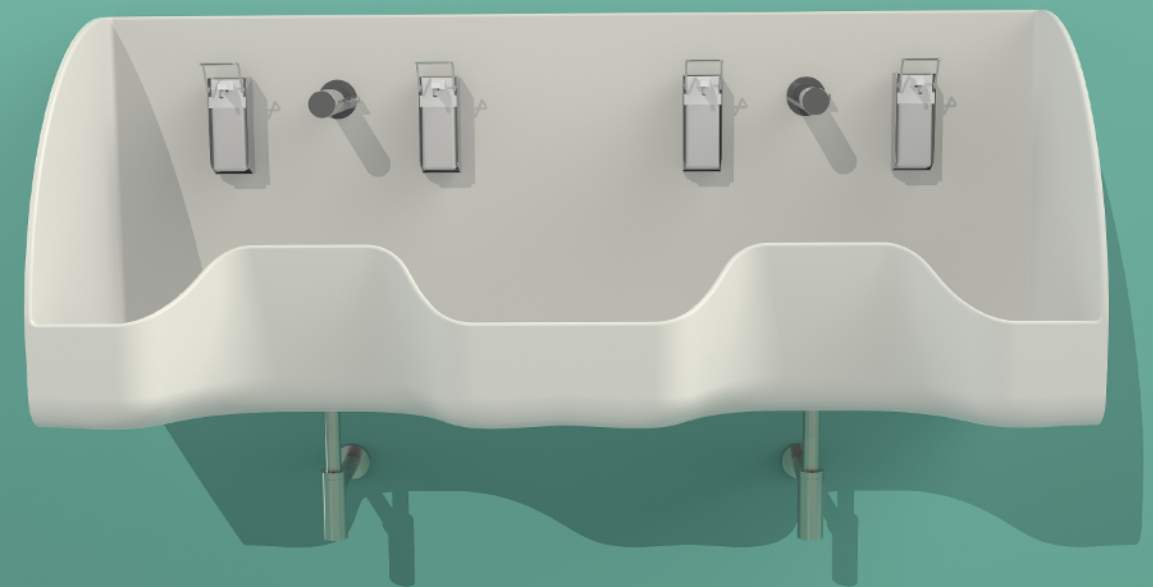
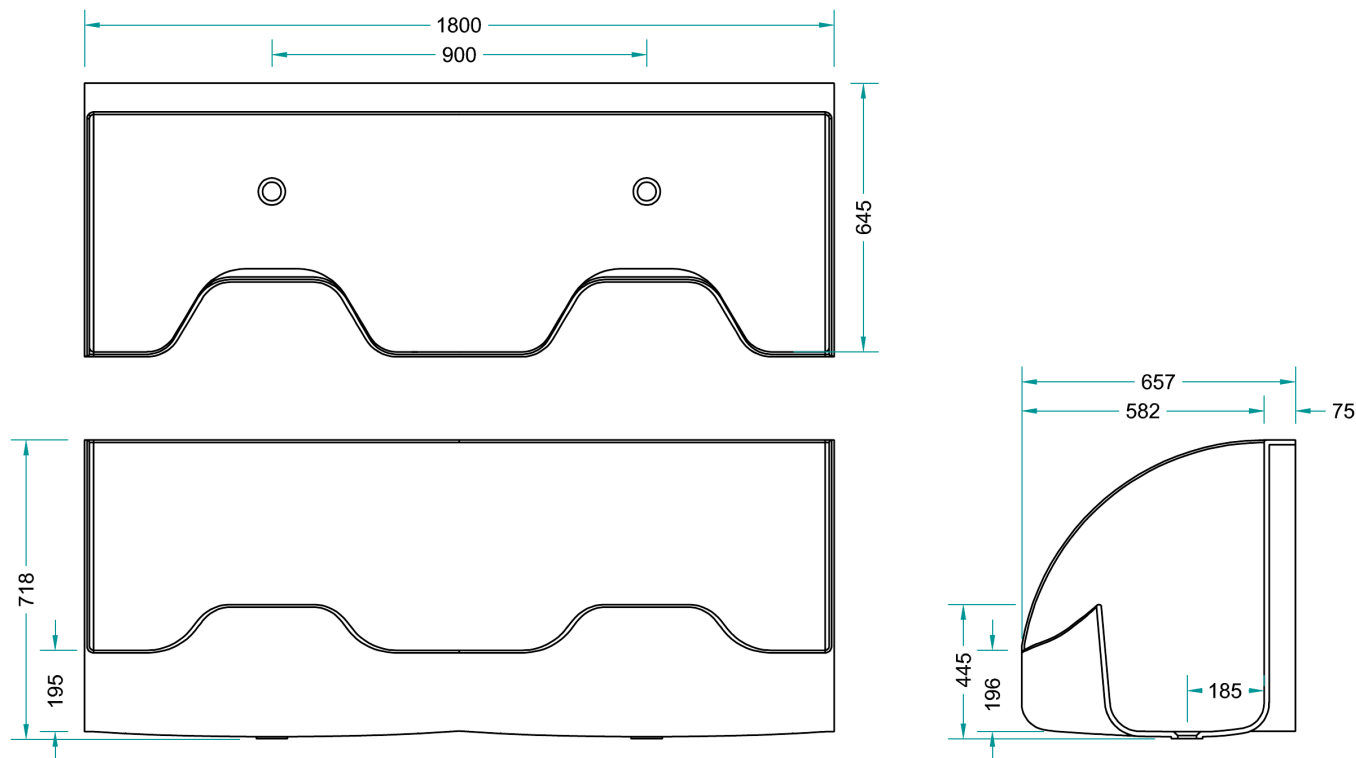
- cover panels at the back and sides of the sink – allow for convenient and efficient maintenance of the sink, and protection against water splashing onto walls;
- back panel is fully adapted for the installation of plumbing – no additional elements are required for the installation of the faucet and disinfectant dispensers.

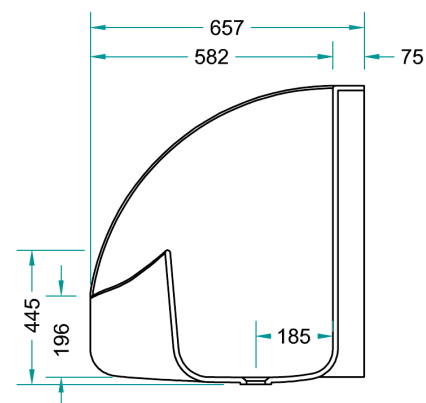
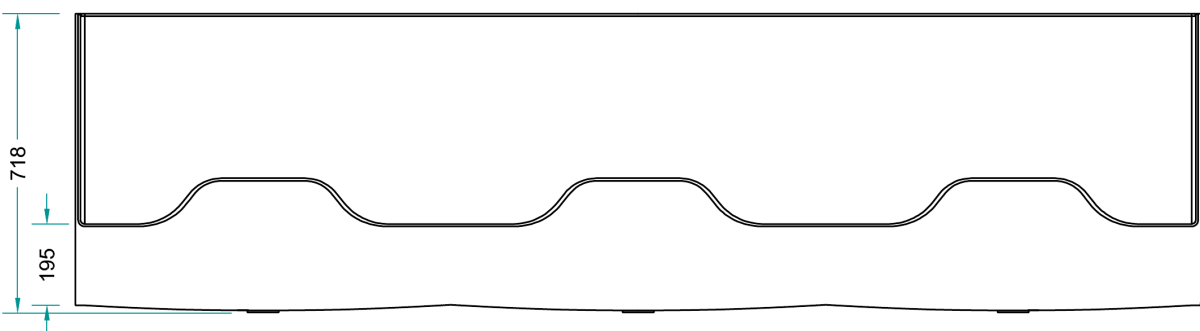
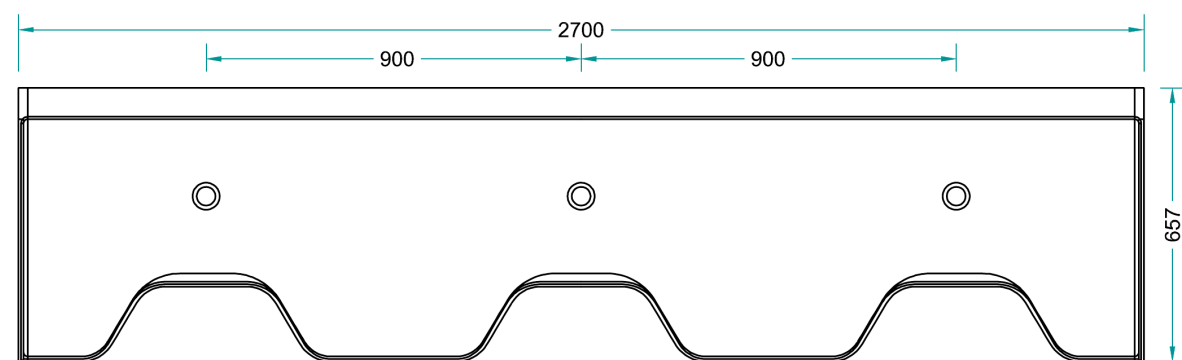
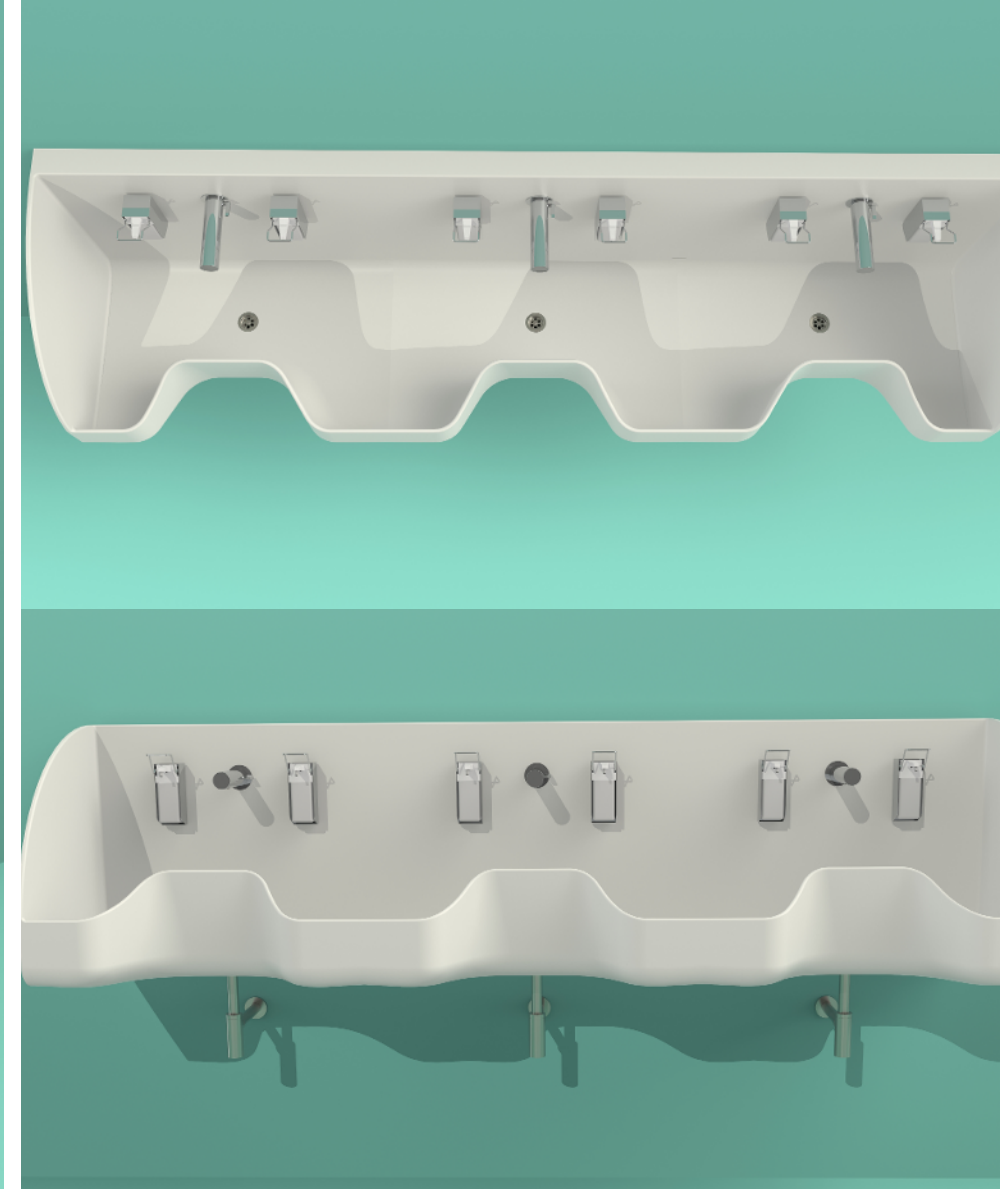




# WDO Double

- two sinks in one – no joints or seams between the sinks. A one-piece construction for high standards of hygiene;
- larger size – 90 cm for the more convenient functionality of each washbasin.



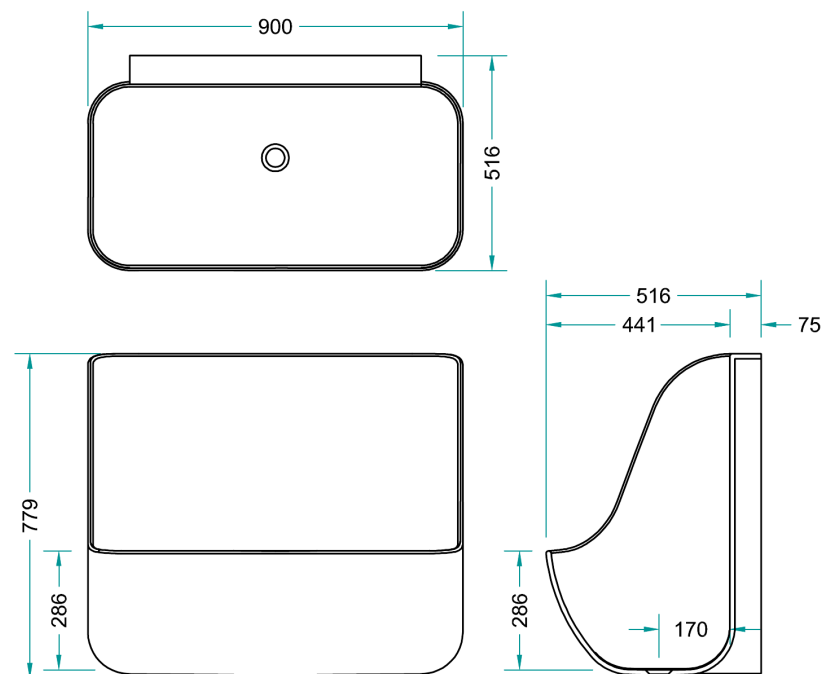


## WDO Triple

- three sinks in one – no joints or seams between the sinks. A one-piece construction for high standards of hygiene.



## ABRA Single



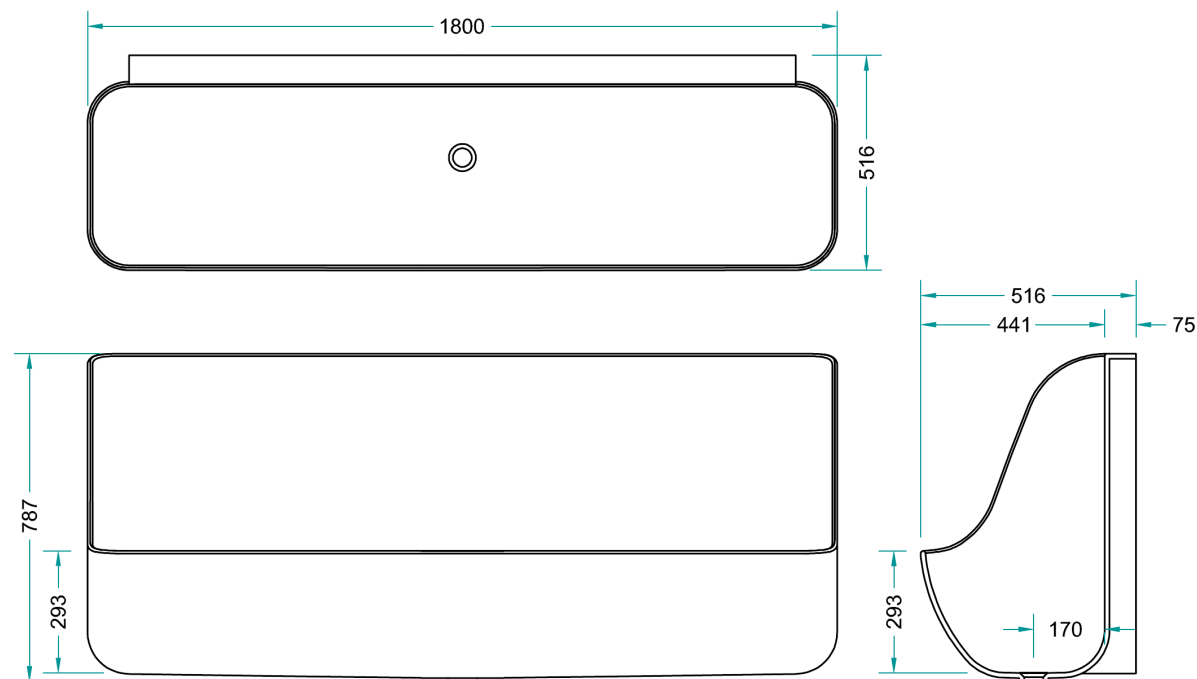
## ABRA Series advantages:

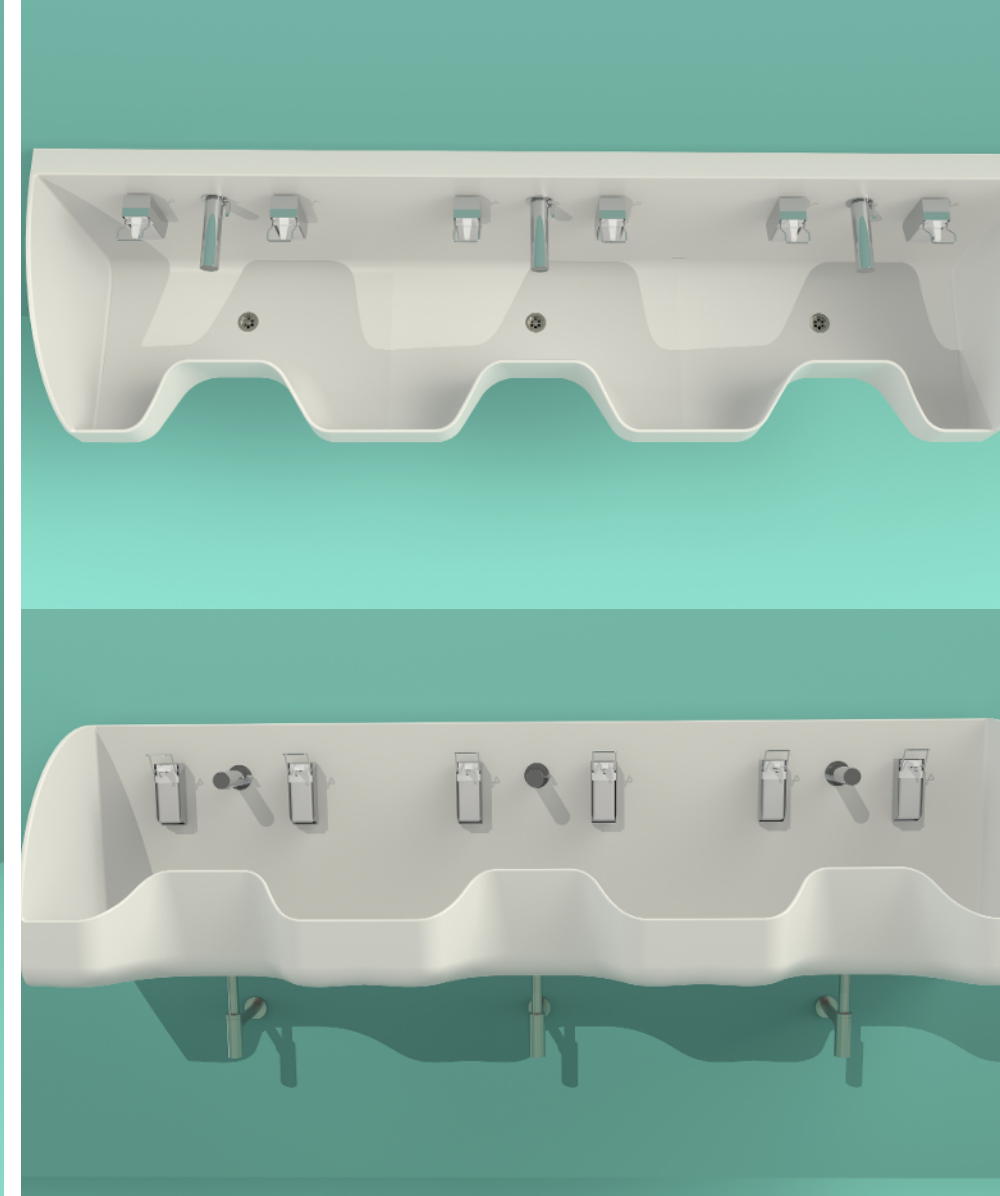
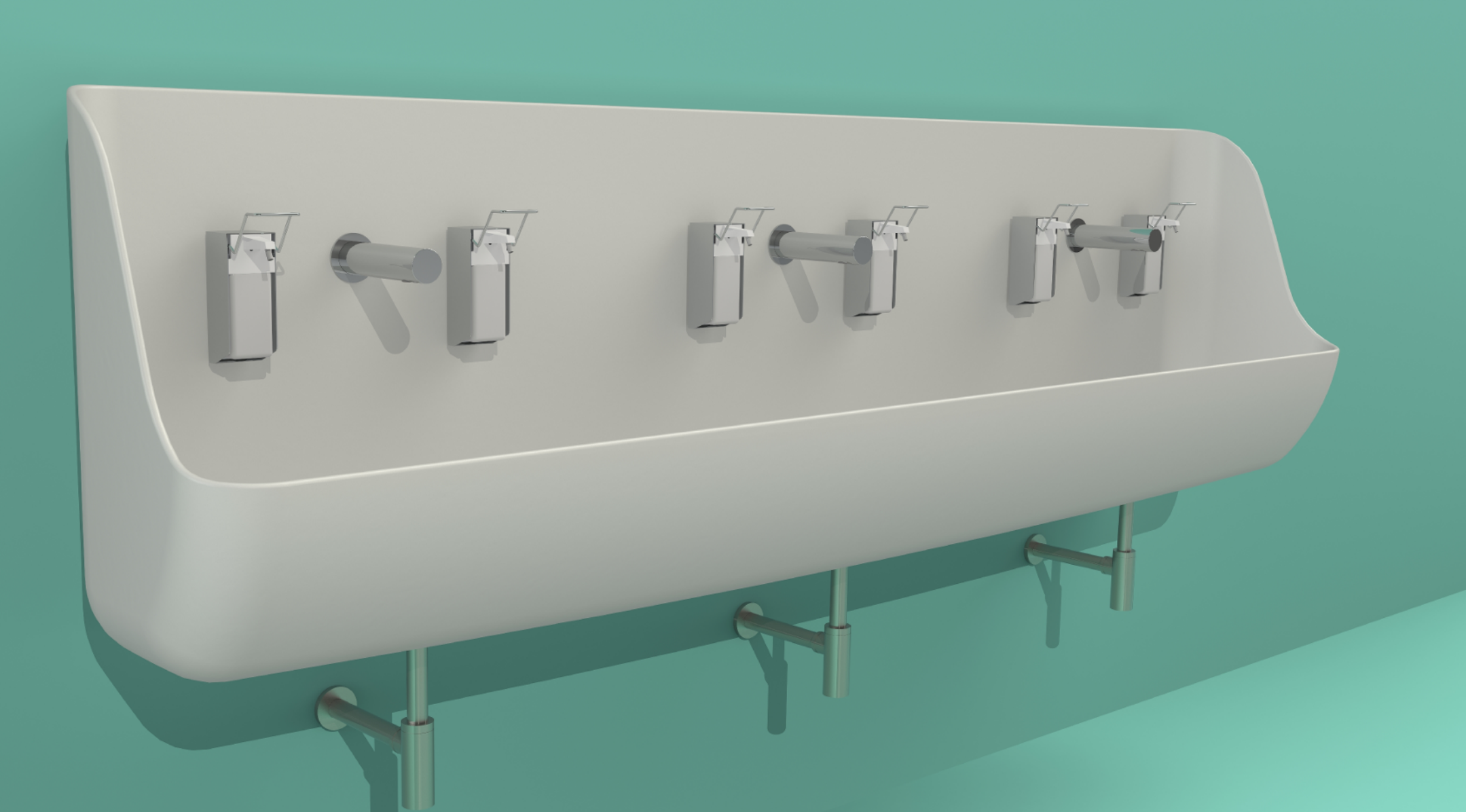
- Ergonomic design – the mixer tap is placed higher on the sink, which is more ergonomic and comfortable for the user.
- Space-maximising design – the design permits installation the smallest possible distance from the wall, enabling placement even in narrow spaces.
- elevated front part of the sink – protection against water splashing onto clothing;
- sufficient depth – protection against water splashes and drops, while providing no risk of accidentally touching the bottom of the sink with already clean hands;
- the sink has no flat surfaces – an additional precaution to prevent placing any objects not related to hand washing and disinfection on the sink, in order to keep the area as clean as possible;
- rounded inside corners – for convenient and effective sink cleaning;
- wall-mounted – does not occupy extra space on the floor and does not interfere with floor cleaning;
- easily attached to the wall – installation does not require any additional structures;
- white colour – dirt can be noticed easily and cleaned effectively. If the sink looks clean, it is clean.



## ABRA Double

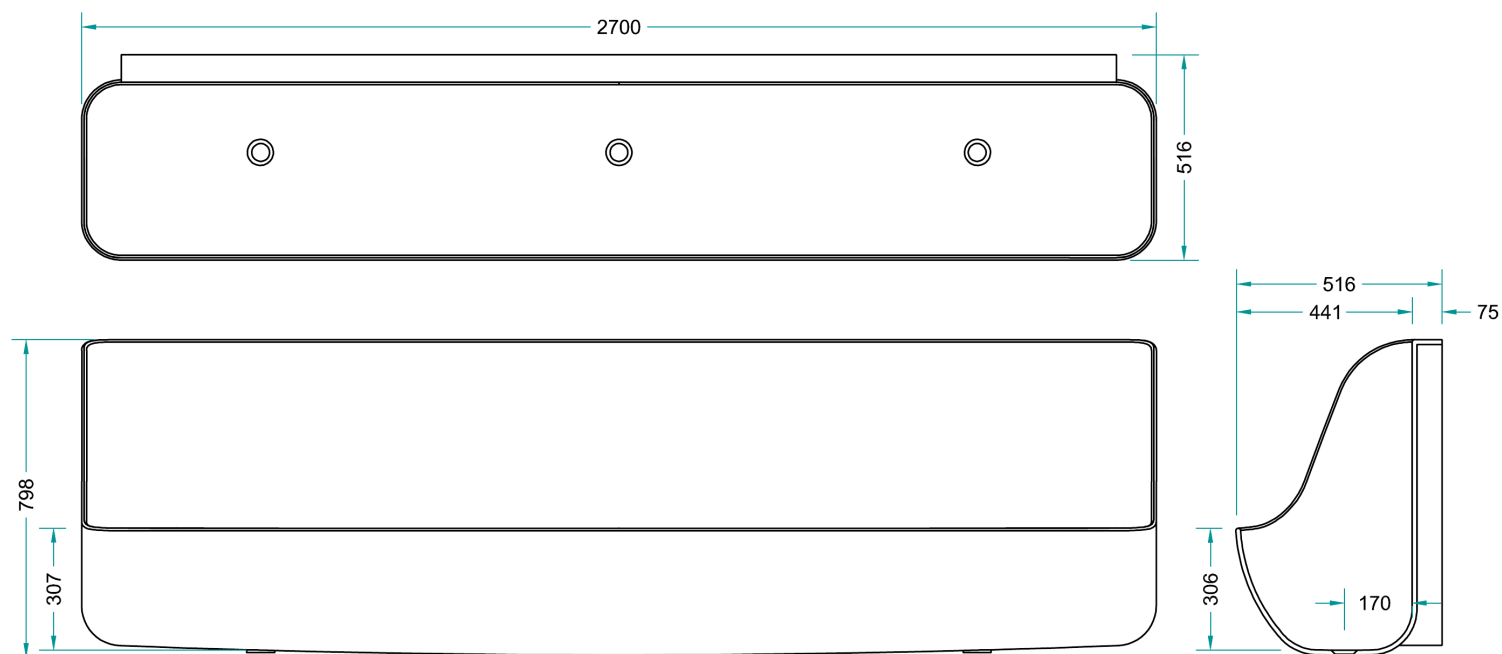
- two sinks in one – no joints or seams between the sinks. A one-piece construction for high standards of hygiene.





## ABRA Triple

- three sinks in one – no joints or seams between the sinks. A one-piece construction for high standards of hygiene.



# Accessories

- Touch-free electronic faucet. Activated by an infrared sensor
  - For cold or premixed water
  - Adjustable settings
- Chrome plated body, other finishes available
  - Sink or wall mounted

Faucet "Tubular"



Soap dispenser "Tubular"



- Touch-free electronic soap dispenser for sink or wall mount
- Activated by an infrared sensor
- Chrome plated body, other finishes available
- Adjustable settings with remote control

Faucet "Csaba"



- Touch-free electronic faucet.
- Activated by an infrared sensor
- For cold or premixed water
- Adjustable settings
- Chrome plated body, other finishes available

Soap dispenser "Classic"



- Touch-free electronic faucet. Activated by an infrared sensor
  - For cold or premixed water
  - Adjustable settings
- Chrome plated body, other finishes available

Faucet "Dolphin"



- Touch-free electronic faucet. Activated by an infrared sensor
- For cold or premixed water
- Adjustable settings
- Chrome plated body, other finishes available
- Sink or wall mounted

## Soap Dispenser



- Stainless steel finish
- For liquid or gel soap/disinfectant
- Inner plastic container
- Elbow control
- Brushed finish



HoReCa/ Коммерческие  
объекты/ Komercoobjekti

## Soap Dispenser



- Liquid soap/disinfectant dispenser
  - 1L volume
  - Brushed finish

Bathroom surfaces/  
badezimmer  
oberflächen/поверхности для  
ваннхх комнат/ vannas istabas  
virsmas



## Siphon



- Stainless steel sink siphon
- Without drain valve
- Outlet  $\varnothing$  32mm
- Matt surface



Surgical sinks, disinfection  
stands/ Chirurgische  
waschbecken,  
desinfektionsständer/  
Хирургические раковины,  
стенды дезинфекции/  
Çirurgiskās izlietnes, dezinfekcijas  
stendi

Kitchen tops , window sills/  
Küchen oberflächen,  
Fensterbänke/ Кухонные  
поверхности, Подоконники/  
Virtuves virsmas, palodzes





SIA "KORTE.LV"

+371 67227757

+371 29203040

korte@korte.lv

www.korte.lv

